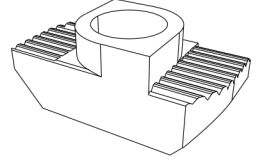
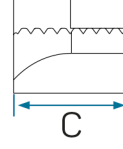
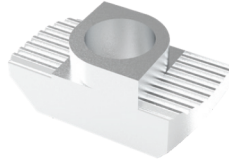


TIRTIKLI SOMUN

STOK

HAMMER NUT

6 8 10

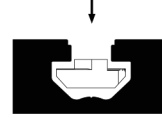
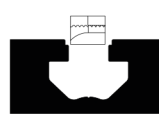
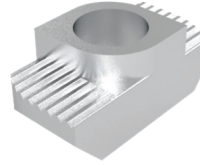
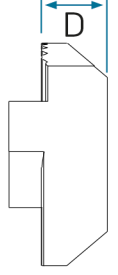
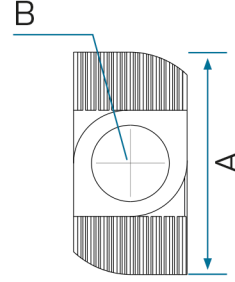
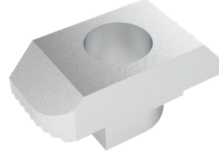


TIRTIKLI SOMUN

Montaj bittikten sonra kanala yerleştirilebilir. Bu sayede ilave parça eklenebilir. Somun üstündeki tırtıklar sıkma esnasında profile batarak daha mukavim bir yapı oluşturur.

HAMMER NUT

It can be added to the groove after the assembly is completed. In this way, additional parts can be added. The notches on the nut create a stronger structure by pressing into the profile during tightening.

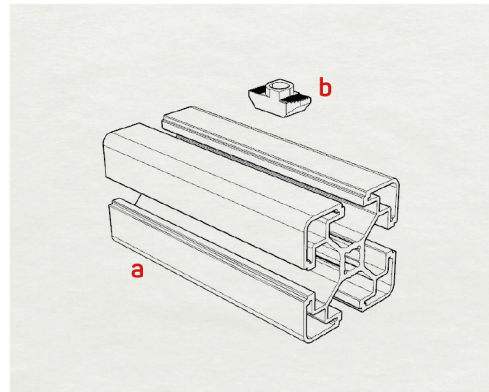


KOD	ÜRÜN ADI	A	B	C	D
AS00328-002409-001	Sigmateknik Tırtıklı Somun M4 6K	11	M4	5,9	4
AS00328-002409-002	Sigmateknik Tırtıklı Somun M5 6K	11	M5	5,9	4
AS00328-002509-004	Sigmateknik Tırtıklı Somun M4 8K	16	M4	7,9	5-0.5
AS00328-002509-005	Sigmateknik Tırtıklı Somun M5 8K	16	M5	7,9	5-0.5
AS00328-002509-006	Sigmateknik Tırtıklı Somun M6 8K	16	M6	7,9	5-0.5
AS00328-002609-004	Sigmateknik Tırtıklı Somun M4 10K	19	M4	9,9	5,8
AS00328-002609-005	Sigmateknik Tırtıklı Somun M5 10K	19	M5	9,9	5,8
AS00328-002609-003	Sigmateknik Tırtıklı Somun M6 10K	19	M6	9,9	5,8
AS00328-002509-002	Sigmateknik Tırtıklı Somun M8 10K	19	M8	9,9	5,8

1.ADIM

Tırtıklı somun profile üstten ve yandan sürülür.

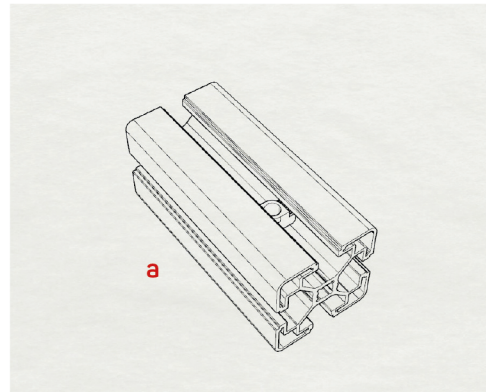
STEP 1: Hammer nut is roller or slided into the groove of the profile.



2.ADIM

Tırtıklı somun doğru yere konumlandırılır.

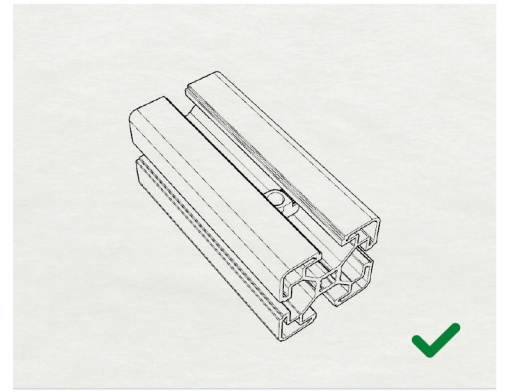
STEP 2: Hammer nut is positioned properly.



3.ADIM

Ürün kullanıma hazır hale gelmiştir.

STEP 3: Ready for use.



a- Profil b- Tırtıklı Somun